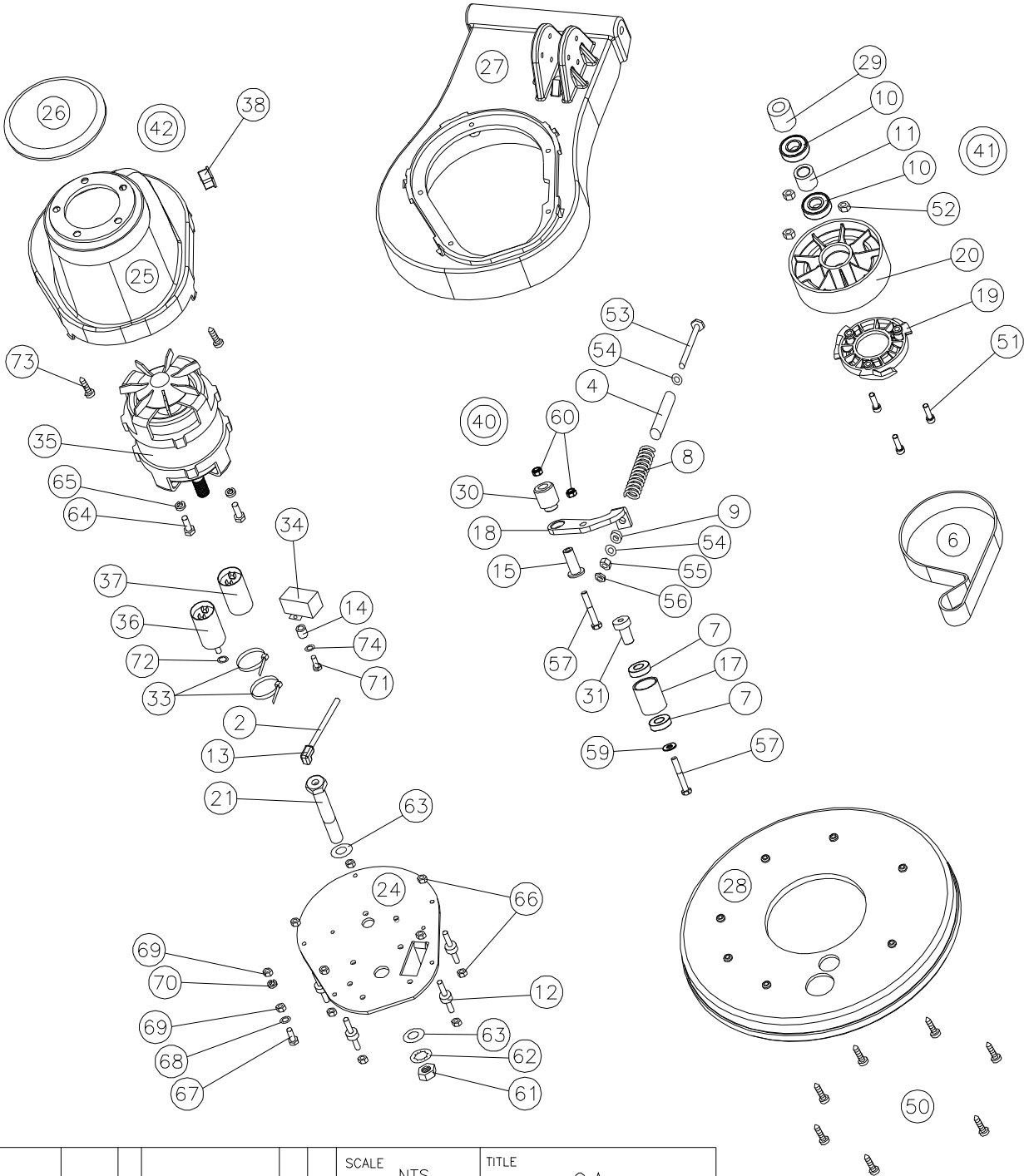
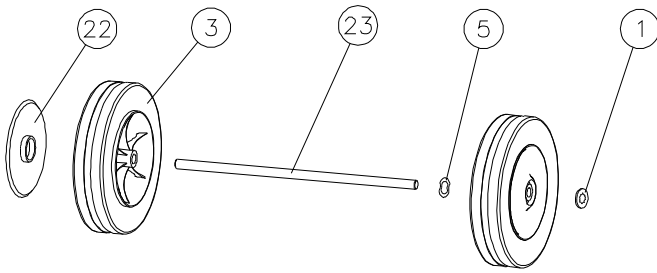


Truvox International Ltd.,
 Third Avenue, Millbrook,
 Southampton. Hampshire.
 SO15 0LE.
 Service & Spares: 023 80706601
 Customer Services: 023 80706600
 General Enquiries: 023 80702200



SERIES	D
SERIAL NUMBER	FROM 02965



					SCALE	NTS	TITLE			
14.01.02	-	B	GEN UPDATE	CL	CHECKED		G.A			
10.05.01	-	A	NEW DRAWING	CL			PRODUCT	DRAWING/PART No	SHEET 1 OF	
DATE	CRO No	ISS	REVISION RECORD	DR	CHK	DRN CML	ORBIT BASE ASSY.	09-1003-0000	A4	1 SHEETS

Orbis Base Assembly Service Parts List

Model Ref.:- 05-3446-0000 & 05-3447-0000 (200 & 400 Speed)

Service Parts List Issue 3 Dated 14-Jan-2002

Ref. Drawing 09-1003-0000 Issue B Dated 14-Jan-2002

Drawing Ref.	Original Part Number	Current Part Number	Description	Qty
1	2-254	02-0254-0000	Starlock washer	2
2	2-264	02-0264-0000	Pipe	0.145M
3	2-3121	02-3121-0000	Wheel	2
4	2-3130-1	02-3130-1000	Adjusting Bolt Thread Protection Tube	0.06M
5	2-3185	02-3185-0000	Crinkle Washer	2
6	2-3499	02-3499-0000	Belt - main drive	1
7		02-3812-0000	Belt Roller Bearings 6002	2
8	2-3501	02-3501-0000	Belt Tensioning Spring	1
9		03-6172-0000	Rubber Washer	1
10	2-3505	02-3505-0000	Output Drive Bearing 6204DDU	2
11	2-3506	02-3506-0000	Bearing Spacer	1
12	2-3507	02-3507-0000	Flexible coupling - vibration damper	5
13	2-3442	02-3442-0000	Barbed Elbow Fitting	1
14	2-3519	02-3519-0000	Round Plastic Spacer	1
15		03-6582-0000	Tension Arm Pivot Bush	1
16				
17		03-6585-0000	Idler Pulley	1
18	3-6076	03-6076-0000	Tension Arm	1
19	3-6077	03-6077-0000	Engagement Hub	1
20	3-6078	03-6078-0000	Pulley	1
21	3-6079	03-6079-0000	Spindle	1
22	3-6080	03-6080-0035	Special Cap	2
23	3-6081	03-6081-0000	Axle	1
24	3-6082	03-6082-0000	Motor Mount Plate	1
25	3-6083	03-6083-0027	Motor Cover	1
26	3-6084	03-6084-0035	Fan Cover	1
27	3-6101	03-6101-0035	Base mold	1
28	3-6102	03-6102-0027	Brush Guard 17"	1
29	3-6106	03-6106-0000	Output Drive Spacer	1
30		03-6583-0000	Tension Arm Spacer	1
31		03-6584-0000	Idler Bearing Spigot	1
32				
33	4-279	04-0279-0000	Cable Ties	2
34	4-3150	04-3150-0000	Relay	1
35a	4-3223	04-3223-0000	Motor 1100W, 50Hz, 4 Pole (200 Speed Machine)	1
35b	4-3224	04-3224-0000	Motor 1100W, 50Hz, 2 Pole (400 Speed Machine)	1
36	4-3228	04-3228-0000	Capacitor Run 32 uf	1
37a	4-3230	04-3230-0000	Capacitor Start 80 uf (200 Speed Machine)	1
37b	4-3231	04-3231-0000	Capacitor Start 100 uf (400 Speed Machine)	1
38	4-3235	04-3235-0000	Female Socket	1
39	4-3244	04-3244-0000	Base Wiring Kit (Not Shown)	1
40	5-3466	05-3466-0000	Tension Arm and Roller Assembly	1
41	5-3467	05-3467-0000	Drive Pulley and Hub Assembly	1
42	5-3700	05-3700-0000	ORBIS Motor Cover Assembly	1
			Fasteners	
50	2-3515	02-3515-0000	Self Tapper	7
51	M8-30-A-ZN	00-0830-0091	Output Drive Hub/Pulley Fix M8 x 30 Socket Head Screw	3
52	M8-LN-ZN	00-0800-0721	Output Drive Hub/Pulley Fix M8 Nyloc	3
53	M8-120-E-ZN	00-0899-1301	Tensioning Spring Bolt M8 x 130 Hex Head Screw	1
54	M8-OHG-ZN	00-0800-0551	Tensioning Spring Washers Form "C" Large Diameter	2
55	M8-I-ZN	00-0800-0701	Tensioning Spring Nut M8 Full Nut	1
56	M8-J-ZN	00-0800-0711	Tensioning Spring Locknut M8 Lock Nut	1
57		00-0855-0121	Tension Arm Bolts M8 x 55 Hex Head Bolt	2
58				
59		00-0800-0551	Belt Tension Roller Washer Form "C" Large Diameter	1
60	M8-0.5-LN-ZN	00-0800-0751	Bolt Securing Nut M8 Type "T" 1/2 Nyloc Nut	2
61	M20-I-ZN	00-2000-0701	Output Drive Nut M20 Full Nut	1
62	M20-R-ZN	00-2000-0521	Output Drive Securing Washer M20 Int Shakeproof Washer	1
63	M20-OLG-ZN	00-2000-0501	Output Drive Washer M20 Plain Washer	2
64	M8-16-E-ZN	00-0816-0111	Motor Mount Bolt M8 x 16 Hex Head Bolt	4
65	M8-P-ZN	00-0800-0511	Motor Mount Spring Washer M8 Single Coil	4
66	M6-LN-ZN	00-0600-0721	Vibration Mount Nut M6 Nyloc Nut	10
67	M5-20-E-ZN	00-0520-0111	Earth Mount on Plate M5 x 20 Hex Head Screw	1
68	M5-S-ZN	00-0500-0531	Earth Mount on Plate Shakeproof M5 External Shakeproof	1
69	M5-I-ZN	00-0500-0701	Earth Mount on Plate Nuts M5 Full Nut	2
70	M5-P-ZN	00-0500-0511	Earth Mount on Plate Springwasher M5 Single Coil	1
71	M5-20-E-ZN	00-0520-0111	Relay Fixing Bolt M5 x 20 Hex Head Screw	1
72	2-3250	02-3250-0000	Capacitor Securing Washer M8 External Fan	1
73	2-3515	02-3515-0000	Motor Cover Securing Screws	2
74	M5-S-ZN	00-0500-0531	Relay Bolt Shakeproof Washer M5 External Shakeproof	1

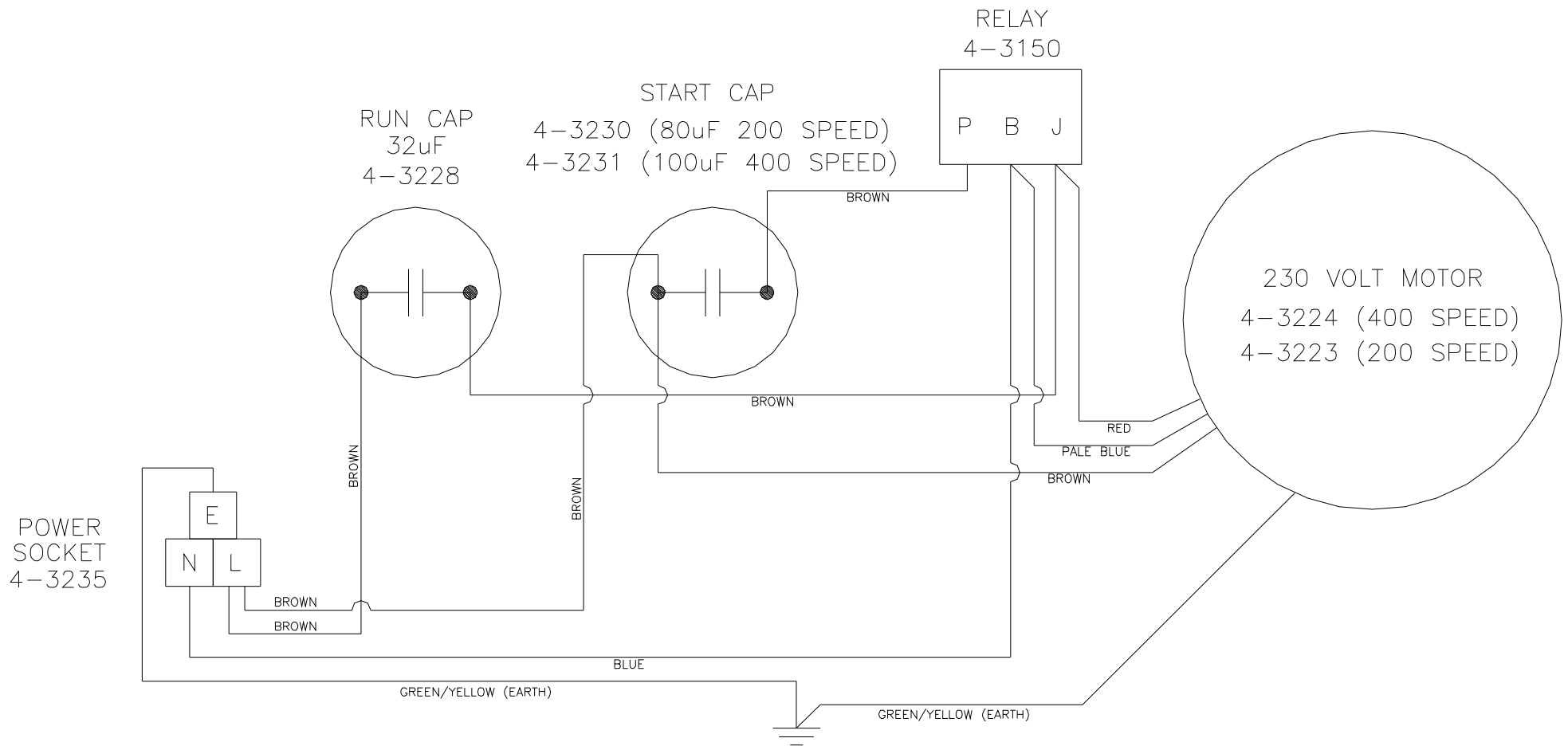
Orbis Handle Assembly Service Parts List

Model Ref.:- 05-3445-0000 (UK 230v) & 05-3449-0000 (Euro 230v)

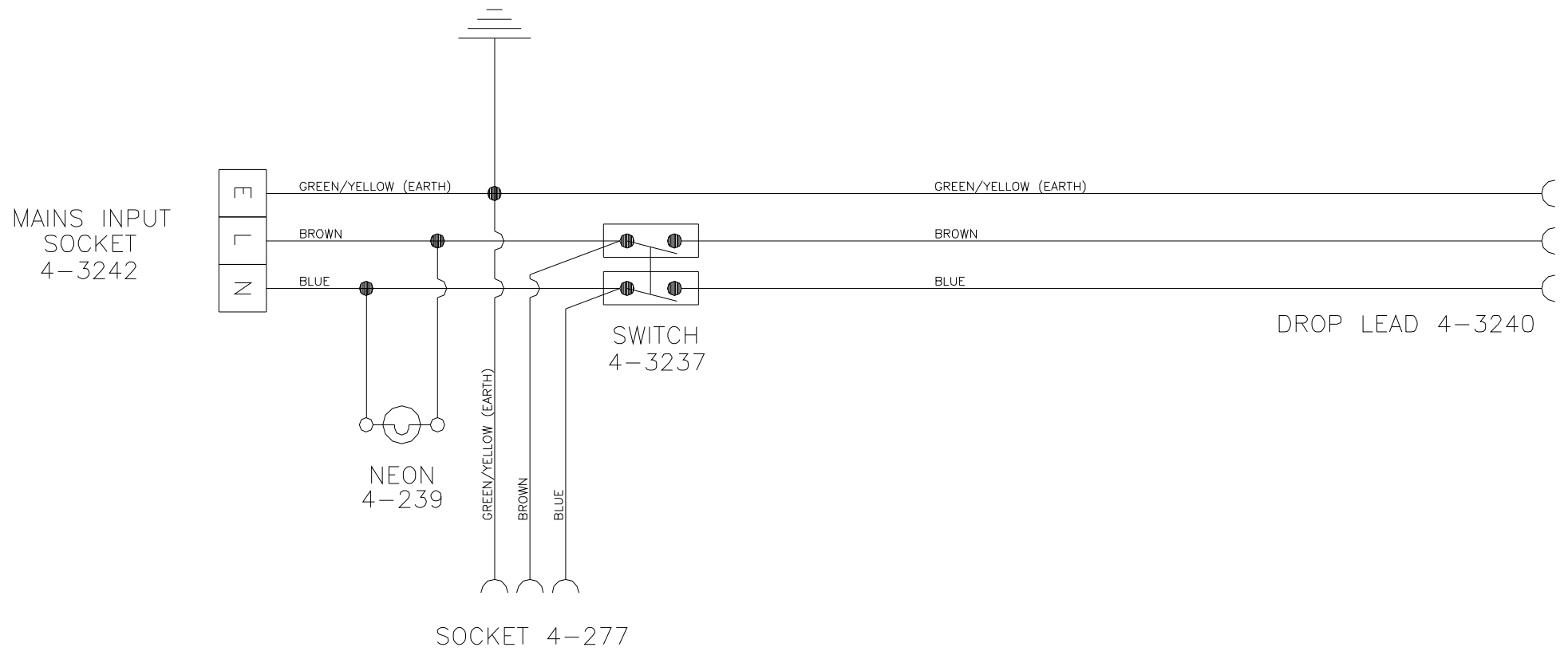
Service Parts List Issue 3 Dated 28-April-2004

Ref. Drawing 09-1002-0000 Issue A Dated 10-May-2001

Drawing Ref.	Current Part Number	Description	Qty
1	02-3151-0000	P Clip	1
2	02-3152-0000	Cable Strain Relief Bracket	1
3	02-3186-0000	Ball bearing	2
4	02-3510-0000	Handle Interlock Spring	2
5	02-3511-0000	Gear dog Spring	1
6			
7	02-3520-0000	Diaphragm Grommet	1
8	02-3521-0000	13mm Spanner for ORBIS (Not Shown)	2
9	03-5403-0000	Cable winder	1
10	03-5410-0000	Cable Winder Spring	1
11	03-6085-0000	Tube - handle aluminium ext.	1
12	03-6086-0027	Handle main - front	1
13	03-6087-0027	Handle main - rear	1
14	03-6088-0035	Solution Lever	1
15	03-6089-0035	Gear lever	1
16	03-6090-0035	Trigger left and right	2
17	03-6091-0000	Handle Rubber boot	2
18	03-6092-0035	Interlock	2
19	03-6093-0027	Cord inlet box	1
20	03-6094-0027	Cord retainer	1
21	03-7831-0000	Aluminium Knuckle	1
22	03-6096-0000	Gear	1
23	03-6097-0000	Dog	1
24	03-6098-0000	Adjusting Gear Rod	1
25	03-6120-0000	Instruction Manual (Not Shown)	1
26	04-0237-0000	Cable clamp	1
27	04-0239-0000	Neon Indicator Black/Green	1
28	04-0277-0000	Shuttered Outlet Socket Black	1
29a	04-3055-0053	Supply Cord Set	1
29b	04-3055-0153	Europlug Supply Cord Set	1
30	04-3237-0000	Switch	1
31	04-3239-0000	Handle Wiring Kit (Not Shown)	1
32	04-3240-0000	Drop lead	1
33	04-3242-0000	16Amp Inlet Socket	1
		Fasteners	
40	02-3516-0000	Self Tapper (Main Handle / Cord Inlet Box)	11
41	02-3517-0000	Self Tapper (Handle Ends)	2
42	02-3518-0000	Self Tapper (Cable Clamps)	2
43	00-0655-0011	Handle Tube Fix M6 x 55 Pozi Pan Head Screw	2
44	00-0600-0521	Handle Tube Fix M6 Shakeproof	2
45	00-0600-0701	Handle Tube Fix M6 Full Nut	2
46	00-0870-0121	Handle Attachment Bolt M8 x 70 Hex Head Bolt	3
47	02-0223-0000	Handle Attachment Washer Zinc Washer 5/16" x 1 1/4"	6
48	00-0800-0751	Handle Attachment Nut M8 Type "T" 1/2 Nyloc Nut	3
49	00-0816-0111	Knuckle Bolt M8 x 16 Hex Head	2
50	00-0800-0501	Knuckle Washer M8 "A" Form Washer	2
51	00-0800-0731	Knuckle Nut M8 Binx Nut	2
52	00-1020-0501	Knuckle Spring Spacer Washer M10 Washer	1
53	02-3523-0000	New Cable Winder Bolt Socket Shoulder Bolt M6 x 8 x 40	1
54	00-0520-0111	Earth Mount on Handle M5 x 20 Hex Head	1
55	00-0500-0531	Earth Mount on Handle Serrated Washer M5 External	1
56	00-0500-0511	Earth Mount on Handle Spring Washer M5 Single Coil	1
57	00-0500-0701	Earth Mount on Handle Fixing Nuts M5 Full Nut	2
58	00-0520-0111	Cable Restraint Bolt M5 x 20 Hex Head Screw	1
59	00-0500-0701	Cable Restraint Nut M5 Full Nut	1
60	00-0500-0501	Gear Rod Washer M5 Washer	1
61	00-0500-0701	Gear Rod Nuts M5 Full Nut	2



BASE UNIT WIRING SCHEMATIC
ORBIS 200 & 400 UK OR EURO



HANDLE WIRING SCHEMATIC
 ORBIS MACHINES UK & EURO